

— KAUFFMAN CENTER —
PRESENTS

THE RAGE AND RAPTURE TOUR!

BLONDIE GARBAGE

WITH SPECIAL GUEST

JOHN DOE & EXENE CERVENKA

Tuesday, July 18, 2017

KAUFFMAN CENTER FOR THE PERFORMING ARTS

PREMIER PARTNER

 **Saint Luke's**
HEALTH SYSTEM

BUILDING SPONSOR



ARISTOCRAT
MOTORS



Mercedes-Benz
of KANSAS CITY



In 14 minutes our stroke team can
save a lifetime of memories.

On average, Saint Luke's stroke experts restore blood flow
to the brain 14 minutes faster than other hospitals.



MARION BLOCH
NEUROSCIENCE INSTITUTE




Take a stroke risk assessment saintlukeskc.org/strokerisk

WHAT DENTISTRY SHOULD BE...

- comfortable treatment
- state of the art services
- caring for you, as a "whole person"
- relaxed atmosphere in a crossroads art space
- convenient appointment scheduling and location
- custom tailored plans to suit your desires and budget



- one appointment crowns & veneers with  cad/cam technologies
- chairside custom characterization
- one appointment root canals
- **invisalign** orthodontics
- discover if you are a candidate for our *one day cosmetic dental make-over*

www.dentistryart.com

CROSSROADS DENTISTRY

1819 WYANDOTTE, KANSAS CITY, MO 64108 - PHONE: (816) 841-0206



DAN FLEMING D.D.S.

Your legs can look and feel good again.

The vein experts at The University of Kansas Physicians specialize in state-of-the-art technologies and minimally invasive techniques for the treatment of varicose and spider veins. Our practice blends attention to aesthetics with focused clinical precision to ensure a safe procedure and stunning results. Our board-certified physicians provide comprehensive treatment of venous disease, including:

- Diagnostic ultrasound testing in our accredited vascular lab
- Endovenous radiofrequency and laser ablation for problematic veins
- Varicose vein treatment
- Sclerotherapy treatment of spider veins
- Percutaneous ablation of perforator veins
- Management of chronic venous insufficiency, ulcers and swelling

Locations

Kansas City, Kansas

3901 Rainbow Blvd.
Kansas City, KS 66160
Inside the hospital

Shawnee

Vein Institute of the
Midwest
7420 Switzer Road
Shawnee, KS 66203

Overland Park

10777 Nall Ave., Suite 210
Overland Park, KS 66211

To schedule an appointment, call **913-588-1227** or 844-323-1227. Visit kansashealthsystem.com to learn more.



THE UNIVERSITY OF KANSAS PHYSICIANS



Celebrating Kansas City



Embracing Kansas City Lifestyle,
Culture & Heritage Through Design

Portfolio

KITCHEN & HOME

Flagship Store

215 W. Pershing Road
Kansas City • Missouri • 64108
816.363.5300



Geri Higgins

Kitchen | Bath | Home

www.portfolio-home.com



ROLEX

OYSTER PERPETUAL
AIR-KING



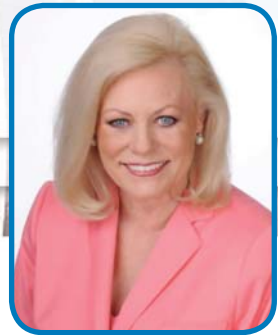
MEIEROTTO
— JEWELERS —

4311 NE Vivion Road Kansas City, MO 64119
(816) 453-1111

ROLEX  OYSTER PERPETUAL AND AIR-KING
ARE © TRADEMARKS.

GREETINGS FROM JULIA IRENE KAUFFMAN,

Chairman of the Board



DEAR FRIENDS,

Welcome to the Kauffman Center for the Performing Arts. We are honored to have you here to celebrate Kansas City's commitment in bringing artistic and cultural excellence to all ages, interests and backgrounds.

The Kauffman Center is an organization with one overriding goal - to bring artists and audiences together. The soul of the Kauffman Center is a living tradition of great artists and extraordinary performances. It is a setting maximized for the special and shared needs of our local artists and their organizations. The Kauffman Center provides affordable access to stages and other facilities for performances, education and other activities.

A strong program of arts education is integral to our mission. Kansas City can and must nurture and educate its own artists, and the Center is solidly committed to participating in this vital endeavor.

Each of you has taken advantage of the opportunity to become personally involved by being here. We hope you will continue through future performances, activities, volunteer work and donations. This is a building for generations to come.

The Board of Directors of the Kauffman Center joins me in thanking you for your most generous support.

A handwritten signature in blue ink that reads "Julia Irene Kauffman".

Julia Irene Kauffman

Chairman of the Board

Kauffman Center for the Performing Arts

KAUFFMAN CENTER BOARD OF DIRECTORS

Ms. Julia Irene Kauffman, Chairman

Mr. David C. Lady, Vice Chairman

The Honorable Peggy Dunn

Mr. Kenneth J. Dworak

Mrs. Shirley B. Helzberg

Mrs. Janice C. Kreamer

Mr. Louis W. Smith

VOTED BEST SEAFOOD RESTAURANT – *Ingram's*

the perfect cast

Serving you at Kansas City Power & Light and Town Center Plaza, join us for our simply prepared seafood flown in overnight from our network of fisheries that care for their craft as much as we do.

BRISTOL
SEAFOOD GRILL

TOWN CENTER PLAZA 913.663.5777
KC POWER & LIGHT 816.448.6007
bristolseafoodgrill.com

A PROUD SUPPORTER OF THE ARTS



Serving expertly aged Prime steaks and seafood cooked over an open wood fire at a surprisingly down-to-earth value. Cozy up to the bar with our signature barrel-aged Manhattan or sink into a spacious booth to experience our sterling reputation for yourself.



j. gilbert's
WOOD-FIRED STEAKS & SEAFOOD

8901 METCALF | OVERLAND PARK | 913.642.8070

jgilberts.com

A proud supporter of the arts.

WE FIGHT DIRTY.



FOR A DEEP-DOWN CLEAN, IT TAKES A TEAM.

Ruthlessly efficient, our work is a beauty to behold and why The Maids® is always the smartest choice in home cleaning.

✓ BONDED AND INSURED

✓ 100% SATISFACTION GUARANTEE

✓ NO-CONTRACT CLEANINGS

Call now for a free, no-obligation estimate

1-800-THE MAIDS

Maids.com Locally owned and operated




Referred for a reason.



Show stopper.

WEBSTER HOUSE
Great style. Great taste.

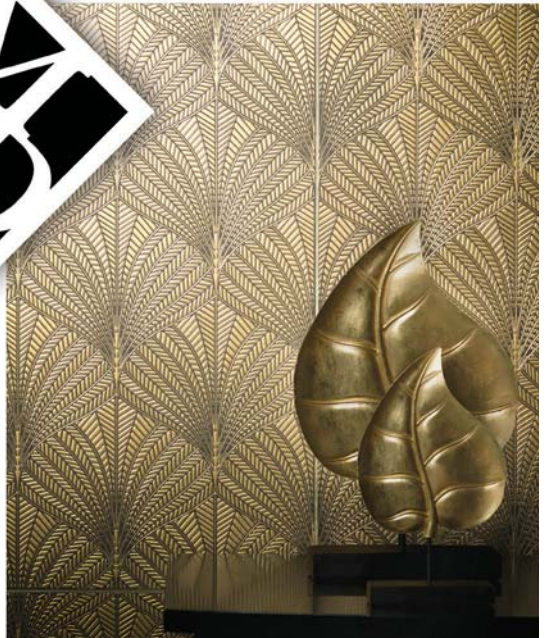
Dine with us before the performance and make the evening unforgettable.

1644 Wyandotte Street | 816.221.4713 | websterhousekc.com | 



International Materials of Design
TILE & STONE

4691 INDIAN CREEK PARKWAY
(I-435 & ROE)
OVERLAND PARK, KS
913.383.3383
www.imdtile.com



PARSONS DANCE

VALERY GERGIEV

MITSUKO UCHIDA

KATHLEEN BATTLE

JOSHUA BELL



YOU CHOOSE

2017 | 2018

HARRIMAN
JEWELL
SERIES

CHOOSE ANY THREE EVENTS NOW AND
SAVE 10% BEFORE SINGLE-TICKET SALES!

Parsons Dance • Charlie Albright, pianist • Chicago Symphony Orchestra
Riccardo Muti, Zell Music Director • Xavier Foley, double bassist
Joshua Bell and Alessio Bax, violinist and pianist • Stars of American Ballet
The Stradivarius Ensemble of the Mariinsky Orchestra
Valery Gergiev, conductor • The King's Singers • Pablo Ferrández, cellist
American Spiritual Ensemble • Maxim Vengerov, violinist in recital
Dance Theatre of Harlem • Mitsuko Uchida, pianist in recital
Nathan Lee, pianist • Kathleen Battle, soprano with piano and choir
The Staatskapelle Weimar Orchestra of Germany • Julia Bullock, soprano

HJSERIES.ORG

816.415.5025



JEDUNN
CONSTRUCTION

WE BUILD INSPIRED PLACES TO

perform

jedunn.com

Kansas City's Classical Connection

91.5 FM

KPR.KU.EDU

K A N S A S
K P R
PUBLIC RADIO
THE UNIVERSITY OF KANSAS



Your place for...

Classical Music & **n p r**

(weekdays 9 a.m.-3 p.m., 7-9 p.m.)

EXCEPTIONAL RETIREMENT LIVING



SERVICE-RICH HOSPITALITY IN THE HEART OF IT ALL.

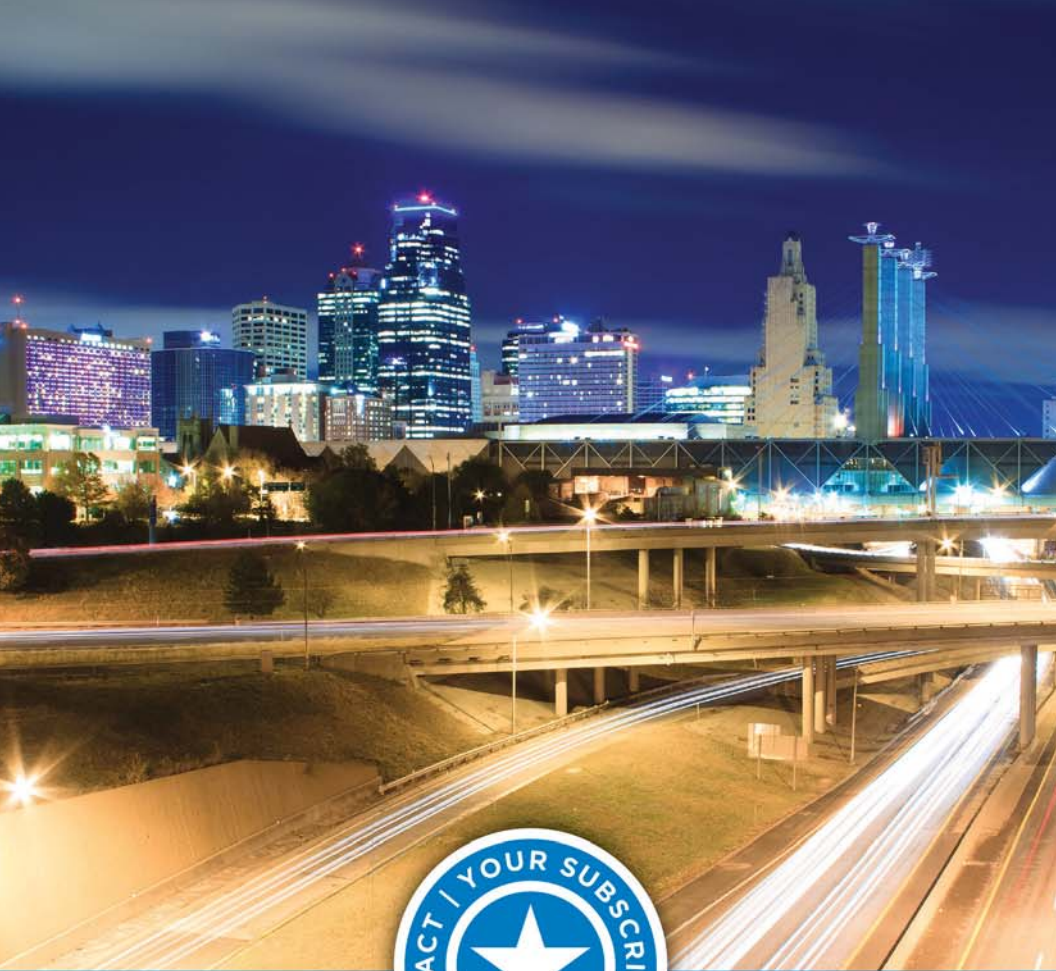
You'll thrive living in our landmark location near the Country Club Plaza with easy access to culture, cuisine and adventure in every direction. You can be confident in the full spectrum of care that supplements our independent living with on-site assisted living and skilled nursing, as we are now part of Saint Luke's Health System.

Call us to begin planning your retirement future at **816.595.5878** or visit us online.

www.BishopSpencerPlace.org



4301 Madison Ave.
Kansas City, Missouri 64111



Proud to support
the Kauffman Center for the
Performing Arts.

THE KANSAS CITY STAR,
MEDIA COMPANY

OUR COMMUNITY.
YOUR STORY.

VANBROCK

PRIVATE • RARE • REGAL



ALEX ŠEPKUS®
NEW YORK



BY APPOINTMENT
913-341-7273

MISSION FARMS, LEAWOOD, KS
WWW.VANBROCKJEWELS.COM



THIS

WORLD

IS BUT A



CANVAS

TO



OUR

IMAGINATION



—Henry David Thoreau—

Proud to support
imagination and the arts
throughout our community,
including the Kauffman Center
for the Performing Arts .



Shawnee Mission
Health

Much more than medicine.

* Kansas City's only Five Star rated hospital for quality, safety and patient satisfaction. *
Details at ShawneeMission.org/FiveStar.



MAGNETIC FIELDS

*Expanding American Abstraction
1960s to Today*

June 8-September 17, 2017

kemperMUSEUM
of contemporary art

KANSAS CITY, MO | KEMPERART.ORG

Generous support is provided by The Andy Warhol Foundation for the Visual Arts.

This project is supported in part by an award from the National Endowment for the Arts.

Image: Mildred Thompson, *Magnetic Fields* (detail), 1991, oil on canvas, triptych, 70½ x 150 inches, Courtesy of the Mildred Thompson Estate, Atlanta, GA. Art and photo © The Mildred Thompson Estate, Atlanta, Georgia

Candida Alvarez
Betty Blayton
Chakaia Booker
Lilian Thomas Burwell
Nanette Carter
Barbara Chase-Riboud
Deborah Dancy
Abigail DeVille
Maren Hassinger
Jennie C. Jones
Mary Lovelace O'Neal
Evangeline "EJ" Montgomery
Howardena Pindell
Mavis Pusey
Shinique Smith
Gilda Snowden
Sylvia Snowden
Kianja Strobert
Alma Thomas
Mildred Thompson
Brenna Youngblood

2018
ARTISANTM
HOMETOUR
GREATER KANSAS CITY

ELEVATED STANDARDS OF DESIGN
SUPERIOR CRAFTSMANSHIP
EXQUISITE PRODUCTS

JUNE
7-17



SINGING THE AMERICAN SONGBOOK
WHAT MAKES A SONG A STANDARD

**2017-2018
SEASON**

**I'VE GOT A
CRUSH ON YOU**

From Stage to the Songbook

September 29–

October 29

2017

**CHRISTMAS
IN SONG**

November 24–

December 24

2017

**THAT OLD
BLACK MAGIC**

Harold Arlen

Brings in the Blues

January 19–

February 18

2018

**IT'S
DELOVELY**

The Wit of

Cole Porter and

Noël Coward

March 2–31

2018

**BILLBOARD
BLOCKBUSTERS**

*Counting Down
the Top 40 Hits*

April 20–May 20

2018

**SINATRA'S
SONGWRITER**

*The Genius
of Sammy Cahn*

June 8–July 8

2018



QUALITY HILL
PLAYHOUSE

*SINGING
THE AMERICAN
SONGBOOK*

816-421-1700 • QUALITYHILLPLAYHOUSE.COM

JOIN THE CONVERSATION @THEQHP



SINGLE TICKETS \$38 • SEASON PACKAGES AVAILABLE

CONSOLIDATED COMMUNICATIONS



THE POWER TO WORK, PLAY AND BE AWESOME

Power up your business and home with Consolidated Communications

Welcome to the power to be and do your best. The power to stay connected, share ideas or indulge in your favorite entertainment with no glitches, delays, or downtime. Whether you're at work or at play, Consolidated Communications makes life better with access to CCI Fiber+, one of the fastest, most reliable networks in the nation.

Get Consolidated Communications and get the power.

POWER UP YOUR BUSINESS

- + Data & Internet
- + Voice
- + Cloud Services
- + Managed & Hosted
- + IT Services

POWER UP YOUR HOME

- + High-Speed Internet
- + Digital TV
- + Phone
- + Home Automation
& Security



Consolidated
communications

POWERED BY

CCI fiber+



*Not all services available in all areas.

Call 844.YOUR.CCI or visit consolidated.com

A piano will give your family generations of memories and a lifetime of musical enjoyment!



Friendly Prices • Great Service

Offering a diverse selection of over 100 Grand, Vertical, Digital & Player pianos, we have a piano that your family will enjoy for generations to come.


PIANO4U.COM

Quality beginner pianos... to Vintage Steinways



MID-AMERICA
PIANO LLC

241 Johnson Road, Manhattan, KS
800-950-3774



"Learn, earn and return – it's all about being meaningful."

Maximize Your GIVING

Find out how the Bluford family uses their donor-advised fund to make meaningful donations.

www.growyourgiving.org/bluford


GREATER KANSAS CITY
COMMUNITY FOUNDATION™



JOHNSON COUNTY
COMMUNITY COLLEGE
CARLSEN CENTER

Over 25 Performances

2017-18 SEASON



Oct. 4
John Cleese LIVE



Oct. 28
*William Shatner's
World*



Jan. 13
Cabaret The Musical
(2 shows)

Tickets on sale now!



jccc.edu/TheSeries | 913-469-4445

NO ONLINE FEES | FREE PARKING | WINE & BEER AVAILABLE



50

highly
trained
doctors
now in
one place
downtown.



university
health

bright ideas. best care.

Services provided by Truman Medical Centers

Multiple award-winning specialists
Most insurances accepted
Convenient parking



Our Community at the Center

Since opening in September of 2011...

2.5 million

people have attended a performance or event

257,000+

students have experienced school matinees on our stages

131,000+

young people have been provided transportation funding through the Kauffman Center's Open Doors program

2,000

volunteers have helped provide a memorable experience for patrons contributing 225,000 hours of their time, creating a cost savings of \$5.1 million

50

states and several countries have been represented by visitors to the Kauffman Center

100+

arts organizations have performed on our stages, in addition to our outstanding resident companies, the Kansas City Ballet, the Kansas City Symphony and the Lyric Opera of Kansas City

The Kauffman Center for the Performing Arts is a non-profit 501(c)(3) organization. Thanks to generous donations from individual community members, we offer outstanding programming and support the excellent work of our resident companies. To learn how you can support this effort, visit kauffmancenter.org/support.

- Kauffman Center -
PRESENTS



**BLONDIE & GARBAGE:
THE RAGE AND RAPTURE TOUR**

Blondie & Garbage: The Rage and Rapture Tour brings two quintessential rock acts together to share the stage for one night. John Doe and Exene Cervenka, of the seminal 1970s Los Angeles punk rock band X, open tonight's show.

The members of punk/new wave band Blondie are undeniable pop icons, their sound and sensibility as fresh as when they first topped the charts in the late 1970s. Blondie's brand of cross-genre rock has spawned hits including "Call Me," "Rapture" and "Heart of Glass."

Garbage made a name in the mid-1990s with singles including "Only Happy When It Rains," "Stupid Girl" and "#1 Crush." Since the band's self-titled debut in 1995, Garbage has crafted a blend of dark, industrial noise, sci-fi pop melodies and whirlwind guitar.



Photo courtesy of Blondie

About Blondie

"Here comes the 21st Century," Debbie Harry assuredly sang nearly three decades ago on her solo disc *Def Dumb And Blonde*, "it's gonna be so much better for a girl like me."

With the turn of the century well behind us now, that gleeful prediction has certainly come true: Singer-songwriter Harry, guitarist and co-writer Chris Stein, powerhouse drummer Clem Burke and their bandmates in Blondie are undeniable pop icons, their sound and sensibility as fresh as when they first topped the charts in the late 1970s. In their newest project, *Po11inator*, Blondie enlisted a group of cool songwriters to contribute to the record weaving their own way into the living, breathing story of Blondie, a group that directly affected their own genetic makeup as

- Kauffman Center -
PRESENTS

artists. The list is enviable and reflects the dynamism of Blondie's very own cross-pollinating past - the fans and friends contributing material are blonde-bewigged superstar Sia, Blood Orange frontman Dev Hynes, British singer Charli XCX, Dave Sitek (TV On The Radio), Nick Valensi (The Strokes), Johnny Marr (The Smiths), and Canadian movie blogger and indie rocker (under the name An Unkindness) Adam Johnston. The invincible Joan Jett and crossdressing comedian and singer John Roberts, who rose from DIY YouTube sensation to *Bob's Burgers* regular, both contribute vocals.

"We put the word out and asked people for songs and we got a lot of responses. I'm happy the way it all came together. It was a different approach for us, to draw in all of these things. I feel like we did what we did back then and we put out these sounds and ideas and now we've come full circle, pulling it back in, continuing this ongoing chain of events, this circular motion," Harry shares.

About Garbage

Hailing from Madison, WI, Garbage is guitarist Duke Erikson, drummer Butch Vig, guitarist Steve Marker and lead singer Shirley Manson. On its 1995 debut, *Garbage*, the band's unique sound and provocative visual aesthetic inspired massive worldwide attention.

Garbage's follow-up album, *Version 2.0*, released in 1998, topped charts all over the world and garnered multiple GRAMMY Award nominations, including Album Of The Year. Garbage went on to release two more albums: 2001's *Beautiful Garbage* and 2005's *Bleed Like Me*.

After a 7-year hiatus, the band released its fifth studio album, *Not Your Kind of People*, in 2012 on its independent record label, STUNVOLUME. The album was named one of *Rolling Stone* magazine's Top 50 Albums of 2012 and was hailed as the "alternative to everything," by *Pitchfork*. Garbage has sold more than 15 million albums worldwide and performed in more than 35 countries.





Photo courtesy of Garbage

In 2015, the band celebrated its 20th anniversary with a sold-out world tour and the release of a special 20th anniversary edition of its debut album, re-mastered and featuring previously unreleased material. In 2016, Garbage released *Strange Little Birds*, which debuted at No. 1 on *Billboard's* Top Rock Albums and Alternative Albums chart.



Recognizing Our Special Kauffman Center Donors

The Kauffman Center for the Performing Arts offers appreciation to the following generous donors who have made cumulative gifts or pledges of \$10,000 or more between July 1, 2016 and June 29, 2017. A complete list of our supporters and partners is included on the following pages.

PLATINUM

Melinda & Tom Beal
Constance M. Cooper Charitable Foundation
Courtney S. Turner Charitable Trust- John H. Mize
and Bank of America, N.A., Co-Trustees
DST Systems, Inc.
Peggy & Terry Dunn
Sherry and Gary Forsee
Hall Family Foundation
Harry Wilson Loose Trust
Mr. & Mrs. Barnett C. Helzberg Jr.
Ewing Marion Kauffman Foundation
Julia Irene Kauffman Donor Advised Fund
Muriel McBrien Kauffman Foundation
David & Demi Kiersznowski/DEMCO
Tom and Jan Kreamer
Ford & Christine Maurer
Tom & Judi Pease McEvoy
I.A. O'Shaughnessy/Wysong Family Foundations
Richard J. Stern Foundation for the Arts -
Commerce Bank, Trustee
Charlotte & Bob Ronan
Sarah & Landon Rowland
Saint Luke's Health System
John & Marny Sherman
Soave Automotive Group
Louis & Sharon Smith
Teresa & Tom Walsh
Michael Waterford

GOLD

Evelyn Craft Belger & C. Richard Belger/
Belger Cartage Service, Inc.
Abe & Anna Bograd Memorial Trust
Frank and Margaret G. McGee Fund
Harry Portman Charitable Trust, UMB Bank,
NA Trustee
J. E. Dunn Construction Company
The Short Family Foundation
Joe & Susan Sims
Theater League
Thomas & Sally Wood Family Foundation
Tradebot Systems, Inc.

SILVER

Amigoni Urban Winery
Black Community Fund
Mr. & Mrs. Herbert C. Buchbinder
Paul & Bunni Copaken
Deluxe Corporation
Richard I. Galamba
The Glass Family Foundation
Robert J. & E. Marlese Gourley
Imperial PFS
KCP&L
Kirk Foundation
Linda Watson Family Foundation
Lathrop & Gage, LLP
Mark One Electric Company
Molly McGee
Missouri Arts Council
National Endowment for the Arts
NetStandard Inc.
Nichols Company Charitable Trust
NuWin Enterprises
Piper Jaffray
Laura Robinson
Mr. & Mrs. Michael A. Schultz - Ewing Marion
Kauffman Foundation
Rick & Betsey Solberg
Russell & Deborah Welsh

Kauffman Center ENSEMBLE

Become a Member

Align your company with Kansas City's premier performing arts center and receive year-round business development opportunities, recognition and hospitality benefits.



An Evening with Dayton Moore, January 21, 2016
Pictured: Jeff Simon, Office Managing Partner, Husch Blackwell LLP, Dayton Moore, General Manager, Kansas City Royals & Amy Simon

Grow Your Business

Choose a membership level that works for your company.

Benefits include:

- Tickets to Kauffman Center events and performances
- Free and discounted venue rentals
- Brand exposure and marketing

Support Your Business

- Use membership benefits as rewards or incentives for employees
- Invite employees to unique Kauffman Center special events

Be a Good Community Partner

Demonstrate corporate citizenship by supporting Kansas City's iconic community asset.

For more information, visit kauffmancenter.org/business or contact **Chris Major, Manager of Corporate Giving** at **816-994-7914** or cmajor@kauffmancenter.org

Recognizing Our **ENSEMBLE** Members

David Disney, Chair

Ensemble members receive benefits for employees and clients, networking opportunities and market exposure as they support one of Kansas City's most vibrant cultural assets. Special thanks to the Ensemble members listed below.



Belger Cartage Service, Inc.
DEMDACO
Imperial PFS
JE Dunn
Kansas City Area Development Council
(KCADC)
KCP&L
Lathrop & Gage, LLP
Mark One Electric Company
Piper Jaffray
Southwest Airlines
Tradebot Systems, Inc.

AMC Entertainment, Inc.
Ash Grove Cement Company
BKD CPAs & Advisors/BKD Wealth Advisors
Blue Cross & Blue Shield of Kansas City
BMO Harris
CBIZ MHM, LLC
Commerce Bank
Empower Retirement
First Federal Bank of Kansas City
Hallmark Cards, Inc.
Hawthorn Bank
Henderson Engineers, Inc.
KPMG LLP
Lexmark
Mid-America Merchandising, Inc.
NuWin Enterprises
Dee & Joyce Pack, Cargo Largo
Palmer Square Capital Management
SpecChem
State Street
Stinson Leonard Street LLP
Tnemec Company, Inc
Tower Properties/Buzz and Pam Willard
Travois
Treat America
University of Missouri - Kansas City

Bank of Blue Valley
G. Kenneth & Ann Baum
BNIM Architects
Boulevard Brewing Company
Bukaty Companies
CBRE
Citizens Bank & Trust
Cobbs Allen
Code Koalas
Craig Associates, PC
Crux KC
Dennis Sneed Ford
Digital Sound Systems, Inc.
Dimensional Innovations
EJ's Urban Eatery
EML Payments
Faultless Starch/Bon Ami Company
Gilmore & Bell, P.C.
Global Prairie
GrowthPoint/Larry Hawks
Harvest Productions, Inc.
Husch Blackwell LLP
Karbanc Real Estate Company
Lewis Rice LLC
Martin Leigh PC
Martin Pringle Oliver Wallace & Bauer LLP
McCownGordon Construction
Mobank
New York Life/Kevin Johnson
Bryan Norton / Lockton
Posty Cards
Rainen Companies, LLC
The Roasterie, Inc.
Rosemann & Associates, P.C.
Samson Capital Management
Site 1001
Straub Construction Company Inc.
U.S. Bank Private Wealth Management
Vistage Worldwide, Inc.
Waddell & Reed
Wellington

Membership listing as of June 29, 2017.

Kauffman Center ENSEMBLE



Tradebot Systems is a registered broker-dealer and a member of most major stock exchanges. Based in Kansas City, the company has 60 associates and was founded in 1999.

Featured Ensemble Member **Tradebot Systems**

Tradebot Systems CFO Jennifer Tomlinson said that joining Ensemble, the Kauffman Center's business membership program, aligned readily with several of the company's core interests. "We believe strongly in entrepreneurship and admire the Kauffman family. Becoming part of the Kauffman Center through Ensemble was natural for our company," Tomlinson said.

Tradebot was founded in 1999 and often accounts for 3% to 5% of stock trading in America. Tomlinson said that, as a Kansas City-based company, Tradebot is especially proud that the community has such a world-class venue as the Kauffman Center. She is also aware that many of their 60 associates are performing arts supporters. "Our Ensemble benefits allow us to choose from an amazing range of performances as a way to reward associates and entertain colleagues," says Tomlinson.

Discounted hospitality options are Ensemble benefits that Tradebot immediately put to good use in 2016. The company's annual holiday party is held at a different venue each year, leading to a glamorous event in Brandmeyer Great Hall on December 2nd. Since the company picks locations that are iconic and classic Tomlinson said, "The Kauffman Center certainly fits that bill and provided our team with a memorable evening in an inspiring setting."

SPOTLIGHT

— PREMIER —

Chuck Campbell and Tina Youngblood (second and fourth from the left) enjoyed meeting the members of Pink Martini after their Kauffman Center debut.



Featured Spotlight Premier Members

Chuck Campbell and Tina Youngblood

An Easter church service held in Helzberg Hall introduced Tina Youngblood and Chuck Campbell to the Kauffman Center in 2013. “The incredible space and its acoustics were a revelation, and we wanted to get more involved,” Tina said. They called Janet Mark, senior development director, to take a tour and learn more. Soon they joined Spotlight Premier, a group of donors who make significant annual commitments to support programs and operations at the Kauffman Center.

The couple describes their charitable giving with elegant simplicity: church, education and the arts, with a downtown focus. While they neither live nor work downtown right now, both are strong advocates for efforts to revitalize the urban core.

After the introductory Easter service, the couple joined the Church of the Resurrection Downtown and got involved in helping the church to build a new home at 16th and Grand. They also joined in the church’s partnership with Wendell Phillips Elementary. “It’s an urban school with all the usual challenges,” said Tina, “but it’s high-performing and doing some really innovative things to help kids thrive.”

Chuck, now a real estate developer, said that his first job out of college gives him another interesting link with the Kauffman Center. “I joined Marion Laboratories in 1986 and got to meet Mr. K a couple of times. My love and respect for what he has done for our city is immense.” Tina, whose job as CEO of the insurance company Spencer Re brought her to KC, grew up in Nashville, surrounded by great music options. “It is so great to have to have artists wanting to come *here*—to *Kansas City*, to the *Kauffman Center*. Having such a treasure in a vibrant downtown means a lot to us.”

Recognizing Our Spotlight Premier Members

SPOTLIGHT

— P R E M I E R —

The Spotlight Premier members listed below are an exceptional group of Kauffman Center supporters who share a commitment to the performing arts in Kansas City. Donors make a two-year pledge to commit \$5,000 or more annually. They receive tickets, insider access, and other benefits.

Sherry & Gary Forsee
Julia Irene Kauffman Donor
Advised Fund
Tom & Jan Kreamer
Ford & Christine Maurer
Tom & Judi Pease McEvoy
Sarah & Landon Rowland
John & Marny Sherman
Louis & Sharon Smith

Evelyn Craft Belger & C. Richard Belger
Paul & Bunni Copaken
Richard I. Galamba
Mr. & Mrs. Michael A. Schultz -
Ewing Marion Kauffman Foundation
Joe & Susan Sims
Rick & Betsey Solberg
Theater League
Thomas & Sally Wood Family Foundation
Russell & Deborah Welsh

Ash Grove
Frank Austenfeld & Brenda (Ballard) Austenfeld
Christopher E. Beal & Tim Van Zandt
Peter W. & Lynne K. Brown
Chuck Campbell & Tina Youngblood
Pati Chasnoff
Cissy & Errol Copilewitz
John & Carol Cowden
Ann Dickinson
Dave & Dee Dillon
Peggy & Terry Dunn
Sue Ann & Richard E. Fagerberg
Ann & Gary Fish
Barbara & Peter Gattermeir
Robert J. & E. Marlese Gourley
Mr. & Mrs. Barnett C. Helzberg, Jr.
Irv & Ellen Hockaday
Beth Ingram & Edward P. Milbank
Roger & Sandy Jackson
Trudy & John Jacobson
Rusty & Ann Jandl
Charles S. Joss, Jr.
Demi & Dave Kiersznowski
David C. Lady
Ms. Janet Long
Bill & Peggy Lyons
Dennis & Susan Lordi Marker
Virginia B. McCoy
Molly McGee
Jeannette Nichols
Brad & Linda Nicholson
Dale & Mary Rohr
Ann & Frank Uryasz
Andrew Van Der Laan & Rebecca Schwietz
Tom Van Dyke and Kay Barnes
Michael Waterford
Ms. Elizabeth Hartley Winetroub

For more information or to join Spotlight Premier, contact Janet Mark, Senior Director of Development, at 816-994-7235 or jmark@kauffmancenter.org. Membership listing as of June 29, 2017.

www.KAUFFMANCENTER.org

Recognizing Our Spotlight Members

SPOTLIGHT

Spotlight is an annual membership program that provides donors an elevated experience at the Kauffman Center while supporting our vision. Thank you to the inaugural members listed below.

Mr. Gary J. Baumgartner
Mr. & Mrs. Kent Best
Edward Goldstein & Rachel Krantz
Michael & Anita McRobert

Leo & Yvette Morton
George & Wendy Powell
Lisa & Charles Schellhorn
Susan & Bill Stannard

Dr. Michael &
Patricia Baltezor
Mr. & Mrs. Charles W. Battey
Sue McCord-Belzer &
Irv Belzer
Ken & Carolyn Brown
Steve & Susan Campbell
Lawrence & Donna
Gould Cohen
Martha B. Comment
Deborah Hays

Susie & Spence Heddens
Mr. David S. Holmes
Mr. Paul J. Hughes
Ambassador Allan Katz &
Nancy Cohn
Regina & William Kort
Dr. Jan & Mr. Allan Kraybill
Janet Mark & Frank Lipsman
Steve & Sharon McCray
Braden & Annie Perry
Mr. & Mrs. James M. Prevost

Paul & Katy Schofer
Randy Sedlacek &
Mary Ventura
Zachary Shafran
Greg & Sandee Smith
Morton & Estelle Sosland
Mr. & Mrs. A. L. Summerlin
Bill & Marilyn Taylor
Dale & Diane Wassergord
Michael & Pamela Zanders

Phillip R. & Renata Beaudoin
Jon & Beverly Braatz
Sue Cowan
Una Creditor
A. Bommarito Wines
Rebecca Earp
Caron Hankins & Dayna Deck
R. Steve Holmes
Mr. Delos Knight &
Ms. Peggy Day
Mr. George H. Langworthy, Sr.

Betsy and Seth Lindsey
Wayne E. Lippman
Mrs. Harry C. McCray, Jr.
Mr. & Mrs. Mike P. McMullen
Lisa Merrill Hickok/ Merrill LLC
John L. & Stephanie K. Miller
Steve & Marianne Noll
Padgett Family Foundation, Inc.
Page Communications
Dr. & Mrs. Al Parmet

James A. & Kathy Polsinelli
Don M. Salter
Mr. Greg Smith
Michael & Michelle Testman
Michele & John Thompson
Dr. Maren E. Turner
Kathryn Vaughan &
Kelly Willoughby
Terry & Debbie Westlund
Sheri and Walt Womack

Brad Allen & Gene
Cooper
Anonymous (2)
Gina Beard
Kathy & Frank Bednar
Robert & Sally Bibb
Lisa M. Browar
Mrs. Mary E. Brown
Mr. G. Wayne Burge
Dr. Dustin Burleson
David Erickson
Ms. Ellen D'Amato
Mark L. Gardner
Mary Beth & James K.
Gentry
John & Debi George
Lee & Amy Greif

Alan Grimes
Mr. & Mrs. John C.
Hjalmarson
Sally Milgram &
Saul Honigberg
Steve & Joan Israelite
Marilyn & Kenneth
Johnston
Gary E. Jones Tax
Defenders LLC
Joseph P. Kearns
Mr. & Mrs. Asher C.
Langworthy, Jr.
The Lefkowitz Family
Mike & Vickie Lewer
Elaine & Benjamin Mann
Bobbie Mathes

Jon & Wendy McGraw
Kevin & Susan McGreevy
Kathy and Bill Mignerone
Janet & Dennis Nease
Mrs. Mary Ann
Pinkerton
John & Lisa Poehlman
Greg & Leslie Quarles
Dave Raffel
Suzanne & William
Raney
Terry Satterlee &
William Rice
Sylvia & Russel Riggs
Heather B. Ryan
Lisa Santa Maria
Mr. Vincent J. Scassellati

Fani & William Schiffman
Michael Seck &
Sharon Mossman
Larry Sheppard
Dr. & Mrs. Michael Skoch
Mareta J. Smith
Brenda Smith-Keene
John L. Solomon
Mary Fern & Wallie
Souder
LeAne & Peter Story
Craig D. Sutherland
Judith L. Tharp
Lee & Tamara Toner
Mark Van Blaricum
David Vinson
Mr. Robert M. White

Recognizing Our Spotlight Members

Amy Alumbaugh & Steve Chase
 Dick & Gloria Anderson
 Anonymous
 Gary & Sarah Armour
 Monica & Julian Arredondo
 Rosalind Benita Askew
 Mary C. Ballard
 Nancy Meyer Barber
 Mr. & Mrs. Bruce C. Barksdale
 Kelly Bauer
 Suzanne R. Beatus
 Mr. & Mrs. Robert A. Benefield
 Ms. Mary Birch
 Steve Birge
 Harriet Brazil
 Bruce R. Hopkins & Bonnie J. Buchele
 Judith L. Budde
 C. Burnett
 David Case
 Mr. Phil Chambers
 Mr. Enrique Chaves
 Ms. Gloria Christian
 Sarah & Clay Cook
 Norman & Rachelle Craig
 Stephen Cullen
 Dr. Thomas Curran
 Sean Everhart

Dr. Dave & Mrs. June Farson
 Jeff Ford
 Jarrad & Ellen Foster
 Richard and Sherril Foster
 Sue Gardner
 Carol Gee
 Julie & George Gilchrist
 Gene & Felis Gladstone
 Jacquelyn Golden
 Dennis Gredell
 Mrs. Laura V. Greenbaum
 Ms. Sharan Hale
 M. Patricia & Charles O. Hammond
 Susan M. Harp
 Kathleen Hermes
 Mr. & Mrs. Michael D. Hockley
 John & Ruthie Hoffman
 Barry Holt
 Mr. Jim Holtgraves
 John & Sandra Hornbeck
 F M Hrubetz
 Carol & Dennis Hudson
 Phil and Sue Jones
 Mr. & Mrs. Ronald F. Jones
 Mr. & Mrs. Harvey L. Kaplan
 Mr. & Mrs. Stuart A. Knutson
 Mr. & Mrs. Jim Kroman

Ed & Arlene Ladegaard
 Mr. & Mrs. Steve Lanard
 Jason and Debbie Lehtinen
 Gregory A. Lever
 Linda & Tom Linhoff
 Dr. & Mrs. Frederick B. Lintecum
 Dr. & Janice Lloyd
 Robert & Dena Losasso
 Missy & Bill Love
 Christopher R. & Erin Major
 Scott and Robin Mallory
 Ann W. McCray
 William & Carol Mechler
 Marilyn Mendelson
 Dennis & Julia Meyer
 Graceann Milano
 Mr. & Mrs. John L. Miller
 Candice Minear
 Ms. Julia Morphew & Ms. Sally Levitt
 Heidi and Nelson Nast
 George & Linda Neill
 Nick & Patty Gee Nicholson
 Sara & Dave O'Connell
 Ms. Janet M. O'Neal
 Kathy & Cole Ogdon
 Tom Owsley
 Flossie Pack

Craig Paddock
 Dr. & Mrs. Allen Parelman
 Ken & Kay Patterson
 Mr. & Mrs. Mark Powell
 Jesus & Maria Quintero
 Mr. & Mrs. Harley V. Ratliff
 Kathy Rhodes
 Allan & Carol Robinson
 Paul Rucke & Cheryl Brown
 Jean Rosenthal & Dave Kingsley
 Doctors Marilyn & Rob Rymer
 Mr. and Mrs. Stephen T. Turner
 Sassenick
 Ginzy Schaefer
 Glen and Gloria Scheib
 Mark & Janice Schonwetter
 William & Ginny Shackelford
 Mary and Eric Shatz
 Pete & Annette Sherraw
 Wayne & Tri Shields
 Lebert & Merrily T. Shultz
 Dr. Marjorie Smelstor
 Brendan Smith
 Mrs. Dawn Smith
 Dwight Smith
 Aaron Smullin
 Sheila & Ken Sonnenschein

Charlie & Jeanne Sosland
 Dub & Joy Steincross
 C L Stellmacher
 Jim & Mary Stille
 Mr. Shawn Stogsdill
 Kia S. Stora
 Kim Strong
 Dr. Jack A. Suit
 Mary & Jim Tearney
 Donna & Harvey Thalblum
 Janell & Todd Tinsley
 Dr. Marc A. & Linda W. Turner
 Larry & Mona Tylr
 Keith & Sandy Unrein
 Katie Verschelden
 Marion and Sophia Walker
 Robert Walsh & Barbara Jaekel
 Teri Waters
 Dr. and Mrs. Michael Watkins
 Mr. James R. Westbrook
 Dr. & Mrs. Blake Williamson
 Jan & Tom Wilson
 Mr. & Mrs. Stephen Wissman
 V. Cheryl Womack

Ron Adney
 Bernie & Elizabeth Albrecht
 Josh & Kate Allen
 Ida B. Anderson
 Anonymous (4)
 Jan Armstrong
 Ms. Melanie A. Bailey
 Becky Barber
 Mr. William C. Barr
 Stephen Bastasch
 Mr. & Mrs. Robert Beachy
 Bryan Beatty
 Janette Behner
 Toshia Bell
 Janet and John Bennett
 Renee & Mark Bernhard
 Dave & Susan Berson
 Mr. & Mrs. Jay Besheer
 Barbara Bickham
 Mr. & Mrs. Larry P. Bilotta
 Eric Blevins
 Randall Block
 Meg Bode
 Dr. & Mrs. William W. Bohn
 Mr. & Mrs. John Boren
 John Bosserman
 Ms. Lynn M. Bratney
 Mr. Neil W. Breslow & Ms. Louise C. Hipsh
 Lee & Kristina Brumitt
 David J. Bursac
 Victoria & Kevin Calhoun
 Don and Debbie Canfield
 Mr. Danny Carmichael & Mrs. Theresa Ryan
 Judith Carta & Charles Greenwood
 Patricia A. Centner
 Ross & Cindy Chantrel
 Mr. & Mrs. Leonard Cohen
 Paul & Melissa Conklin
 Mr. & Mrs. Bob Cook
 Cary & Suzan Coulter
 Thomas Coulter, MD
 Mr. Christopher M. Cox
 Ed Crawford
 Susan Elizabeth Crawford
 Otis Crumpton
 Lori Davis
 Dick & Virginia Davis
 Anna Dempsey
 Terri & Bill Dichiser
 Sue Dieckhoff

Annette Acosta-Dickson
 Dr. David Donovan
 Craig & Jenny Doty
 Laurel Downey
 Theodore J. Duff
 Ms. Leisa J. Dunn
 Dawn Dupuy
 Jody & Tom Edgerton
 Cathy Elliot
 Sara Engber
 David Erickson
 Craig Freir
 Tony & Carol Feiock
 Zach Folkerts
 Betty Freeman-Boots
 Mr. Robert A. Fritsch & Ms. Sharyl M. Kenney
 Norman E. & Marilyn AV Gaar
 Dana Edwards Gadsden
 Jon & Cheri Gallion
 Brent & Kelley Gardner
 Mr. & Mrs. James Gegg
 Gregory & Margy Gehrig
 Shelly Gibson
 Dr. John Goldberg & Ms. Maria Brockman
 Martha Gershun & Don Goldman
 Mr. & Mrs. Eric R. Gonsler
 David Gonzalez
 Tracey Graham
 Tom & Barbara Gray
 Mike Grosko
 Mr. Harsh Gupta
 Ms. Ann Hager
 Linda Haney
 Diane Harrison
 Jeff Harshbarger
 Marcia Bush Haskin
 Frank & Ginny Hawk
 James W Hayes
 Debbie Haynes
 Fabiola Carmen Herdopiza
 David & Kathleen Higley
 Kay Hines
 Nate & Felicia Hogan
 Christine Holland
 Edwina Honderick
 Lynn & Marilyn Hoover
 Sylvia Hopkins
 Joan Horan
 Bob Hunn

Nancy Hunter
 Susan Husted
 Thomas & Sue Hutcheson
 Sally Ingram
 Dr. Corey William Iqbal
 Dr. Deborah Ann Jantsch
 Milton Jeffrey Sr.
 Allen & Carol Jenks
 Mr. & Mrs. Robert E. Johanson
 Donna Johnson
 Dr. & Dr. Robert E. Johnson
 Lewis Jones
 Michael A. Jones
 Ms. Tricia R. Kauffman
 Mark Kaufman & Patty Kahn
 Drs. John D. & Ann M. Kenney
 Brent Kimmi
 Daniel Compton & Jolle Kirpensteijn
 Paula Kitt
 Mr. & Mrs. James Klein
 Ms. Carol Kobza
 Mr. Jason B. & Dr. Heather Kort
 Steve & Laura Kracht
 William Kravit
 Mr. & Mrs. Norman M. Kressmann
 Guy Kriz
 J. Lowell Kroff
 Mark Kroll
 Jennifer Lynn Lamar
 Edwin H Lane
 Lisa Laney
 Suzanne Layton
 Timothy J Lefman
 Lisa A. Leonard
 Scott Leonard & Betsy Olson
 Arthur & Cynthia Liebenthal
 Mr & Mrs. Phillip E. Lillard
 Mr. Bradley G. Liggett
 Marshall & Nora Lockton
 Mary D. Lockton
 Sharon & Peter Loftspring
 Theodore & Priscilla LoPresti
 Kathryn & Bob Lorenzen
 Dee Dee & Leonard Lowland
 Genise M. Luecke
 Jeremy Lumianski
 Mr. & Mrs. Michael R. Lyon
 Barbara & Roy Major
 Forrest & Kathryn Manda
 Ms. Jan Marcason
 Beth Markley

Neal Marten
 Don & Alexis Martin
 Bob & Kay Maygar
 Anne McAuley
 Kirk & Jeannie McClure
 William H. & Darlene McCluskey
 Robert Meegan
 Mark Meers
 Leslie Michel & Roger Lippert
 William and Donna Milam
 John & Lee Miller
 John & Kimberly Mitchell
 Laurie Mitchell & Rob Beeson
 Susan Mordue
 Zoe D Morgan
 Edward K. Morris
 Maria E Morrison
 Susanne Oberrieder
 Corlett M. Orr
 Scott & Robin Page
 Brenda Pallone
 John Paper Jr
 Judy A. Payne
 Jeff & Amy Peak
 Mrs. Lizbeth Pener
 Susan Pepperrine
 Michael A. Perrie
 Timothy W. Peters
 M Phillips
 Ross Pinkepank
 Shannon Pipes
 Dr. Ronald D. Platt & Ms. Sue Singer
 Donita Plaumann
 Mr. & Mrs. Zane R. Potts
 Rebecca L. Price
 Gina & Kent Pulliam
 Bill & Phyllis Rector
 Gregory & Rebecca Reid
 Katy Roberts
 William Roberts
 Diann Elizabeth Roche
 Juliana and Ken Rock
 Dick & Debbie Rose
 Dick & Marsh Rosenthal
 David & Angie Richele Rustio
 Doug & Janette Rushing
 Dan Sakata
 George & Sana Saleh
 Jose & Judy Samayoa
 Frank & Holly Sanitate

Kathleen SAYSOFF
 Howard Schneberger
 Alan Schooler
 Dr. Maureen Sheehan
 Charles Lee Shippee
 C D Simmons
 Steven & Sallie Simmons
 Tracy Simons
 Kathryn C. Sitz
 Kimberly Sivils
 Jane Smeltzer & Dave Suptic
 Dorothy J Smith
 Dr. Kevin Smith
 Ms. Fonda Sprengelmeyer
 Stephen & Barbara Staffer
 Alan H. Staples, II
 Greg and Janet Starks
 Charles & Mary Stebbins
 Susan Steckmetz
 Nancy Bosché & David Stewart
 Ken W. Stewart & Ted Derrick
 Rachel Stover
 Todd & Lauren Stover
 Eugene M. Strauss
 John & Samantha Sturgeon
 Diane Mills
 Mary Elizabeth Sweetwood
 Mr. & Mrs. David L. Thomas
 Mr. Thomas R. Thomas
 Ms. Karen S. Thompson
 Mr. & Mrs. Michael R. Torti
 Mark & Patricia Van Tuinen
 Mrs. John D. Turner
 Keith & Sharon Vickers
 Jennifer Vitela
 Kurtis Wagner
 James Walsh & Wilma Collado
 Les & Sarah Washington
 Shelley Wehmeyer
 Andrew White
 Lisa Whitlow
 Tanya & Debbie Gillespie-Wilcox
 Debbie Winter
 David & Lisa Wise
 Sarah Woellhoff
 Mr. & Mrs. Joel C. Womack
 Sherry L. Wright
 Harry Wyre, Jr., MD

Spotlight membership levels offer options for any budget and range from \$65 to \$2,500. For more information, contact Janet Mark, Senior Director of Development, at 816-994-7235 or jmark@kauffmancenter.org. Membership listing as of June 29, 2017.



Recognizing Our Adventure Circle Members

Our thanks to the following Adventure Circle members who have made donations in support of *National Geographic Live!* Members are invited to a Meet & Greet with a presenting photographer and receive priority access to seat renewals and upgrades.

NATIONAL GEOGRAPHIC LIVE! ADVENTURE CIRCLE

Dennis Aguiar & Susan Glatt

John & Mary Anderson

Sarah Apple

Curt & Miki Baird

Becker Lassen Insurance Agency, Inc.

Kathy & Frank Bednar

Michael & Amy Billings

Larry S. Braddy

Tracie Breeding

Julie Brown

Butch Soto & Karen Carter

Thomas M. Cohen

Mary Dees & Steve Hazel

Tom & Marci Forbach

Barbara Frankland

Lance W. Godley

Brenda J. Hafner & Alexandra Strong

David & Robin Hagedorn

William Hallagin & Lara Hayes

Marc & Gail Helfer

Chad Helmer

Mr. & Mrs. Barnett C. Helzberg, Jr.

Henderson Engineers, Inc.

Evan & Joan James

Marcia Karbank & Joseph Smuckler

Kristin Kiehnhoff

Greg Lambert

Richard & Barbara MacArthur

Kevin Maring

Aaron and Shannan McKee

Matt & Dawn Mikus

Thomas & Heather Morrow

Deloras Pemberton

Stephanie Pruitt

Dave Raffel

Pat Raffel

Clark W. Rogers

Marianne Roos & David Bland

Pete & Nancy Rucker

Dena Sanders

Paul & Katy Schofer

Danielle Simons

David & Linda Skaff Family

Lisa & Greg Soendker

Terry & Jean Stephens

Morris W. Sykes

Fred & Abigail Tempel

Kathy & Dan Terrill

Frank Vail

Andrew Van Der Laan and

Rebecca Schwietz

Barbara Jean Vescovo

Jack & Clo Whitaker

Mr. & Mrs. Allen Wilson

To learn more about Adventure Circle, contact Janet Mark, Senior Director of Development, at 816-994-7235 or jmark@kauffmancenter.org.

Company Matching Gifts

You may be eligible to increase the impact of your donation through your employer. Many businesses match charitable contributions by an employee, retiree or spouse.

The following is a list of companies that offer matching gifts. Please contact your human resources department for the matching gift form and return it to the Kauffman Center.

Alliance Data

American Century Investments Foundation

Anheuser-Busch Foundation

AT&T Matching Gift Program

Bank of America Charitable Foundation

Blue Cross and Blue Shield of Kansas City

Burlington Northern Santa Fe Foundation

Burns & McDonnell

Chevron Matching Gift Program

Deluxe Corporation Foundation

DST Systems, Inc.

Eli Lilly & Company Foundation

Embarq Matching Gifts Program

EPR Properties

Ewing Marion Kauffman Foundation

ExxonMobil Foundation

GE Foundation

GE Foundation

H&R Block Foundation

Hall Family Foundation

Hallmark Cards, Inc.

Johnson Controls Foundation

Kansas City Southern

KCP&L

Marion & Henry Bloch Family Foundation

Merck Partnership for Giving

Morgan Stanley

Muriel McBrien Kauffman Foundation

ONEOK, Inc.

Pfizer Foundation Matching Gifts

Pitney Bowes Matching Gifts

Schering-Plough Foundation

Sprint

State Street Matching Gift Program

Swiss Re

The Sosland Foundation

US Bancorp Foundation Matching Gifts

Verizon Foundation

Westar Energy



Recognizing Kauffman Center Annual Donors

Hundreds of donors make annual gifts to programming and operations each year, allowing us to connect thousands of people to the Kauffman Center. Beneficiaries include kids attending student matinees and underserved families taking in a *Kauffman Center Presents* performance.

UNDERWRITERS

Black Community Fund
Deluxe Corporation
Richard J. Stern Foundation for
the Arts - Commerce Bank,
Trustee
Laura Robinson
Teresa & Tom Walsh

SPONSORS

Amigoni Urban Winery
Balls Food Company
J. E. Dunn Construction
Company
NetStandard Inc.
Saint Luke's Health System
Soave Automotive Group

GENERAL OPERATIONS

Don & Christine Alexander
Mr. & Mrs. David B. Anderson
Anonymous
Toni Arenson
Ms. Pamela J. Baker
Kim Rock & Bill Barr
Bartlett & Company Grain
Charitable Foundation
Melinda & Tom Beal
Lennie Berkowitz
Rennie & Mark Bernhardt
Rita & Irwin Blitt
Harvey S. Bodker
Dr. & Mrs. A. Michael Borkon
Ken & Carolyn Brown
Peter W. & Lynne K. Brown
Dr. Jon & Angela Browne
Pete B. Browne & Julie Walker
Browne
Dr. Stephen K. & Susan Bubb
William Buchanan
Mr. & Mrs. Herbert C.
Buchbinder
Marian Wood Bump
Mary & Anthony Buren
Mr. & Mrs. Gary L. Bussing
Kay & John Callison
Ms. Gloria Christion
Vince & Julie Clark
Barton J. & Phyllis Cohen
Eva & Bill Cummings
Dr. Doug & Barbara Cusick
& Family
Don & Patricia Dagenais
Mr. & Mrs. Carl J. Dicapò
John & Nancy Dillingham
DST Systems, Inc.
Richard & Maureen Durwood
Truman & Joan Eldridge
EPR Properties
David Erickson
Ewing Marion Kauffman
Foundation
Sally Firestone
Barbara Frankland
Frick Family Foundation
Mr. & Mrs. Edward Fried
Dr. & Mrs. Michael D. Frost

Sara Funk
Roger Gardner
Mr. & Mrs. James Gegg
The Glass Family Foundation
Stanley L. & Geraldine Goldberg
Family Foundation
Marilyn & Kenneth Hager
Mr. & Mrs. Allan Hall
Donald J. Hall
Mr. & Mrs. Donald Hall Jr
Harry Portman Charitable Trust,
UMB Bank, NA Trustee
Hartley Family Foundation
Michael & Marilyn Haverty
Family Foundation
Debbie Haynes
Deborah Hays
William & Kathryn Henderson
Mrs. Paul H. Henson
Steve & Kathleen Hermes
Mr. Jim Holtgraves
John & Sandra Hornbeck
Joan Horan
Beth Ingram & Edward P. Milbank
Dr. & Mrs. Roger Jackson
Trudy & John Jacobson
Rusty & Ann Jandl
Kevin Johnson
Marilyn & Kenneth Johnston
Linda & Topper Johnson
Virginia & David Jones
John Kander
Kauffman Foundation Matching
Gifts Program
Julia Irene Kauffman Donor
Advised Fund
Dr. Andrew & Lynn Kaufman
Mr. & Mrs. Jerry Kelly
Jonathan & Nancy Lee Kemper
Mrs. John D. & Ann M. Kenney
Mrs. Barbara S. King
David & Lisa Klose
Tom & Stacey Koenigsfeld
Ann D. Krause
Mr. & Mrs. David G. Kreher
Jennifer Lagerquist
Dr. & Mrs. Calvin Lentz
Janet K. Long
Mazie Long
Thuy Luu
Bill & Peggy Lyons
Major Brands
Mr. & Mrs. John B. Martin
Lorraine & Norman Martin
Marion & Henry Bloch Family
Foundation
Dr. & Mrs. Ben D. McCallister
Marilyn & John McConnell
Mrs. Harry C. McCray, Jr.
P. Alan McDermott
Molly McGee
Mr. & Mrs. James E. McGraw
Philip Meiers
Mr. & Mrs. John M. Middelkamp
Mr. & Mrs. William and Kathy
Migneron
Virginia McD. Miller

Candice Minear
Michael & Patricia Morrissey
Leeta F. Murphy
Mr. & Mrs. Daniel F. Musser
Virginia & Richard Nadeau
Bill & Barbara Nelson
Henry & Cara Newell
Nichols Company Charitable
Trust
Jeannette Nichols
Bradley & Linda Nicholson
James B. Nutter & Annabel
Nutter
Sara & Dave O'Connell
Kathy & Cole Ogdon
Tom W. Olofson
Mr. & Mrs. Charles R. Olsen
John Paper Jr
Richard D Parent
Dr. & Mrs. Al Parmet
Ken & Kay Patterson
Dr. & Mrs. Larry W. Piebenga
Jack & Susan Pierson
Piper Jaffray
Mrs. Susan & Charles Porter
Mr. & Mrs. Peter E. Powell
Mrs. Carolyn Price
Dave Raffel
Ralph L. Smith Foundation
Douthat, UMB Bank, n.a.,
Trustee
Mr. & Mrs. Thomas Rhone
Mr. & Mrs. William R. Robbins
Paul Rocke & Cheryl Brown
Dr. & Mrs. Patrick B. Ryan
Mr. G. Mark Sappington & Dr.
David S. McGee
Mr. & Mrs. Michael A. Schultz -
Ewing Marion Kauffman
Foundation
Dale & Peggy Schwader
Betty C. Scott
Mr. James R. Seward
Larry Sheppard
John & Marny Sherman
The Short Family
Mr. & Mrs. Lester Siegel, Jr.
Mr. & Mrs. Andrew E. Smithson
Mr. Craig Sole & Mr. Wayne Long
Mr. & Mrs. Stephen S. Sparks
Stephen Philibosian Foundation
Susan B. Susz
Tension Envelope Foundation &
the Berkley Families
Thomas & Sally Wood Family
Foundation
Mr. & Mrs. William R. Thomson
Mr. & Mrs. Carl Thorne-Thomson
Company Kitchen LLC
Larry & Mona Tyril
Ann & Frank Uryasz
Tom Van Dyke and Kay Barnes
Jean & Don Wagner
Mr. & Mrs. Bill Walker
Myron & Nicole Wang
Dr. Bradley & Barbara Warady
& Family

Michael Waterford
Mr. James R. Westbrook
Byron & Sandra Whitaker
Mr. Robert White
Mr. & Mrs. Kelly P. Wilkinson
Mr. Eugene R. Wilson
Ms. Elizabeth Hartley Winetroub
Sheri & Bob Wood
Mr. & Mrs. William D. Zollars

OPEN DOORS

*Connecting kids to
the Kauffman Center*
Dr. Stephen Bumgarner
Cosentino's Downtown Market
Courtney S Turner Charitable
Trust, John H Mize Jr. and
Bank of America, trustees
Enterprise Holdings Foundation
Frank and Margaret G. McGee
Fund
Harry Wilson Loose Trust
Lisa Hickok
J. E. Dunn Construction
Company
Clifford and Diane Jones
Foundation
Jeremy & Michelle Kay
Kristin Lawson
Thomas & Gay Manning
Mariner Foundation
McCownGordon
Construction LLC
Mr. & Mrs. James E. McGraw
The City of KCMO
Neighborhood Tourist
Development Fund
Rainen Companies LLC
Richard J. Stern Foundation for
the Arts - Commerce Bank,
Trustee
Charlotte & Bob Ronan
Mr. Clarence E. Simmons
Mr. Donald Steele
Tradebot Systems, Inc.
Truman Heartland Community
Foundation
Teresa & Tom Walsh

IN KIND PARTNERS

360° Vodka
All Seasons Event Rental
Allied Materials and
Equipment Co.
Amigoni Urban Winery
Boulevard Brewing Company
Coca-Cola Refreshments
Cosentino's Downtown Market
Cumulus Media
Google Inc.
Hilton President
Hotel Phillips
Kansas City Star
KCUR
Lifted Logic
Southwest Airlines



Kauffman Center Endowment and Capital Donors

The Kauffman Center for the Performing Arts is able to provide extraordinary arts experiences each year due to the generosity of the donors listed below who helped make the building a reality. We appreciate their gifts and commitment to enriching the lives of everyone in our community.

FOUNDING DONORS

Grand Benefactors

Muriel McBrien Kauffman Foundation
Ewing Marion Kauffman Foundation
Julia Irene Kauffman Donor Advised Fund
Hall Family Foundation
The Brandmeyer Family
Shirley Bush Helzberg & Barnett C. Helzberg, Jr.

Benefactors

American Century Investments
Bank of America, Trustee:
Arthur Bloomgarten Trust
W.J. Brace Trust
Louis & Elizabeth Nave Flarsheim Charitable Foundation
Lindon Q. Skidmore Charitable Foundation,
William V. Sisney, co-trustee
John W. & Effie E. Speas Memorial Trust
Richard S. Wyler Charitable Trust
Blue Cross & Blue Shield of Kansas City
Tom & Judy Bowser
Pam & Cary DeCamp
The Gary Dickinson Family Foundation
DST Systems, Inc.
JE Dunn Construction Company
Richard & Maureen Durwood
Francis Family Foundation
Arvin Gottlieb Charitable Foundation, UMB,
Corporate Trustee
Greater Kansas City Community Foundation
H&R Block
Adele & Donald Hall
The Shirley & Barnett Helzberg Foundation
KCP&L
Jan & Tom Kreamer
Barbara Hall Marshall
Marilyn & John McConnell
Miller Nichols Charitable Foundation
Thomas M. & Betty C. Scott
The Sosland Foundation
The Vivian & Hymie Sosland Charitable Trust
Sprint
The Sunderland Foundation
Susan B. & Mark A. Susz
"UMB Bank, Trustee:
Enid & Crosby Kemper Foundation
Kearney Wornall Charitable Trust & Foundation

Geraldine & R.A. Barrows Foundation
E. Kemper & Anna Curry Carter Community
Memorial Trust"
Rosalie O'Reilly Wooten & Family

Patrons

Andrews McMeel Universal Foundation
Anonymous
Aquila Foundation
Andrew L. Atterbury & Gwyn A. Prentice
Mary & Alan Atterbury
Bank Midwest
Paul & Joan Jenkins Bartlett
Mr. & Mrs. Charles W. Battey
G. Kenneth & Ann Baum
Melinda L. & Tom E. Beal
Robert & Phyllis Bernstein
Marion & Henry Bloch Family Foundation
Kenneth & Lisa Block Philanthropic Fund
Abe & Anna Bograd Memorial Trust
Peter W. & Lynne K. Brown
The Late Saurine L. & Eugene D. Brown
Richard P. and Jane M. Bruening
Lynne & Owen Buckley
Stanley J. Bushman & Ann Canfield
Capitol Federal
Charles & Virginia Clark
Barton J. & Phyllis Cohen Charitable Foundation
Jeannette & Jerome Cohen Philanthropic Fund
Payless Holdings Inc.
Constance M. Cooper
The Copaken Family
Dave & Jamie Cummings
The Curry Family Foundation
Dr. Doug & Barbara Cusick & Family
Mr. & Mrs. Vernon Davidson
DeBruce Companies
The Families of Drs. David & Robert Dockhorn
Irene Dreiseszun
Peggy & Terry Dunn Family
Elsberry Family Foundation
Jacqueline & Robert Epsten Foundation
Todd Epsten & Family
Mark Ernst Family
Sue Ann & Richard E. Fagerberg
Fidelity Security Life Insurance Company/
the Richard F. Jones Family

Continued on next page



Kauffman Center Endowment and Capital Donors

Patrons *continued*

Martha & Marvin Field
Sherry & Gary Forsee
Frick Family Foundation
Dr. Michael & Ginger Frost
Mr. Richard I. Galamba
Patty & Charles Garney
Barbara & Peter Gattermeir Family
Gautreaux Family
Gerson Family Foundation
Stanley L. & Geraldine Goldberg Family Fund
Nancy & Rick Green
Kenneth V. & Marilyn J. Hager
Hartley Family Foundation
The Michael & Marlys Haverty Family Foundation
HCA Midwest Health System
The Hearst Foundations
Charles M. Helzberg & Sandra Baer
Paul & Betty Henson
Irv & Ellen Hockaday
The Hunt Family Foundation, Kansas City Chiefs &
Hunt Midwest Enterprises
Clifford W. & Bonne A. Illig
Mrs. Beth Ingram
Vera Isenberg
Dr. Roger & Mrs. Sandy Jackson
Cliff C. Jones, Jr.
The Kansas City Southern Charitable Fund
Marcia Karbank & Joseph Smuckler
Jonathan & Nancy Lee Kemper
David & Demi Kiersznowski
Deborah Y. & Robert Almy Kipp
Phil & Judy Kirk
Nancy & Herb Kohn
KPMG LLP
George Hodges Langworthy, Sr.
Benny & Edith Lee
Ron & Cassie LeMay
Molly G. Levitt
Linda Lighton & Lynn Adkins
Lockton
Vincent & A.J. LoScalzo
Bill & Peggy Lyons
Colette & James Majerle Family
Dennis & Susan Lordi Marker
Norman & Lorraine Martin
Tom & Kay Martin | Thomas Martin Foundation
Mary Ford Maurer
Tinka & Harry McCray
Tom & Jean McDonnell
The Frank McGee Family
Mr. & Mrs. Fred L. Merrill
C. Stephen Metzler & Brian D. Williams
Mr. & Mrs. John Middelkamp
Edward P. Milbank
Michael & Patricia Morrissey

Bill & Barbara Nelson
Nerman Family
Henry & Cara Newell
James B. Nutter & Company
James B. Nutter Family
H. Tony & Marti Oppenheimer & The Oppenheimer
Brothers Foundation
Oppenstein Brothers Foundation
I.A. O'Shaughnessy Foundation/WVsyong Family
Foundation
P1 Group, Inc.
The Children of Flossie & Steve S. Pack
Bill & Carolyn Patterson
John S. & Mary V. Petrow
Jack & Susan Pierson
Polsinelli
Norman & Elaine Polsky Family Supporting Foundation
George & Wendy Powell
The Privitera Family | Mark One Electric Co.
Fred H. Pryor
Shirley J. Pryor
Bob & Ann Regnier
Victor & Helen Regnier Foundation
Charlotte & Bob Ronan
Sarah & Landon Rowland | The Ever Glades Fund
Carl J. Schramm & Elynn L. Brown
The Victor E. & Caroline E. Schutte Foundation
John & Marny Sherman
The Short Family
Joe & Susan Sims
Louis & Sharon Smith
Elizabeth T. & Frederick M. Solberg, Jr.
Morton & Estelle Sosland
Richard H. Spencer & Katherine G. Spencer
Spencer Fane Britt & Browne LLP
Jane & Jack Strandberg Charitable Foundation,
Bank of America, Trustee
Bill & Bo Stueck
Ten Ten Foundation
The Byron Thompson Family - Country Club Bank
John E. Tillotson & Jody Tillotson
C. Humbert & Carol Tinsman
Elizabeth & James E.C. Tinsman
Tivol
Courtney S. Turner Charitable Trust
The Uhlmann Family
U.S. Bank
Waddell & Reed
The Thomas Connely Wallingford Family
Michael Waterford
Anonymous
Keith & Margie Weber Foundation
William C. & Barbara J. Willson
Mr. & Mrs. Thomas Jefferson Wood, Jr.
YRC Worldwide



Kauffman Center Endowment and Capital Donors

Contributors

Christine & Don Alexander
Brad Allen & Gene Cooper
Suzanne Eleanor Allen
The Marvin & Jeff Alport Family
American Guild of Organists -
Greater Kansas City Chapter
American Italian Pasta Company
A Division of Ralcorp
Holdings
Ameristar Casino Hotel
Kansas City
Mr. & Mrs. Jonathan C. Angrist
Anonymous
Suzie Aron & Joseph Levin
Arvest Bank
Keith & Connie Ashcraft
AT&T Foundation
Frank Austenfeld & Brenda
(Ballard) Austenfeld
Verna G. Austin
Charles & Jennifer Bacon
William & Betty Baker
Bank of America Matching Gifts
Mr. Paul A. Barns &
Dr. Shawn R. Sabin
George & Theresa Barton
Mr. & Mrs. Terry Bassham
Jack & Kim Bastable
Chris Beal & Tim Van Zandt
Mr. & Mrs. Edward L. Benson
Alleta & Don Biggs
T. Eugene Bileski &
Diane R. Krizek
Rita & Irwin Blatt
Annette Bloch
Harvey S. Bodker
Mark S. Box, MD
Barrett & Cheryl Brady
Mary Shaw Branton
George & Leslie Brett
Ruth M. Brito
Jack & Fran Brozman
Dr. Stephen K. & Susan Bubb
Herb & Bonnie Buchbinder
Burns & McDonnell
Betty & Jordan Bushman
Kenneth & Jean Butler
Martha B. Comment
Barry & Suzanne Cooper
Family Fund
Mary Kay & Stephen Corbeil
Michael & Sherry Coughlin
Cray Foundation
Dr. & Mrs. Morton Creditor
Judith Ann Cunningham
Anita Daniels & Family
Cindy & Vince Dasta
Dr. Mark & Diane Davidner
The Lois & Thomas Davidson
Family
John C. & Jane Reusser Davis
Ann Dickinson
Joyce DiDonato
Mark & Amy Dobbins & Family
Maureen Dudgeon & Bradd Silver
Ken Dworak
Courtney R. Earnest
Erik & Beverly Elving

Entertainment Properties Trust
Jo Ann Straube Field
Bob Firnhaber & Sally Groves
Ann & Gary Fish
Jack & Trudy Gabriel
Blanche Gangwere
GE Foundation
David & Linda Gentile
Esther & Donald Giffin
Steven B. & Lisa E. Glassman
Robert J. & E. Marlese Gourley
Grant Thornton LLP
Mary & Bill Grant
Hon. William G. & Peggy
Mathews Gray
Ted H. & Mary Lou Greene Family
Foundation Fund
Lee & Amy Greif
Megan & Michael Grossman
H&R Block, Inc. Matching Gifts
Elise & Allan Hall
Mr. & Mrs. Jeffrey B. Hanes
Marla McCaffree Harper
Dr. & Mrs. Frederick Hartwig
Nancy P. & Robert W. Hatch
Nancy & Tim Helton & Family
Jamie & Bush Helzberg
Drs. Clarke & Mary Henry
Michael & Karen Herman
John Dible Hickok, Jr. &
Lisa Merrill Hickok
David & Linda Hill
James M. Hobbs II DDS &
Grace G. Hobbs
J. B. & Anne Hodgdon
John & Sharon Hoffman
Tom & Denise Holcom
Dorothy H. & David H. Hughes, Sr.
Christopher & Linda Iliff
Tom & Ann Isenberg
Jack Stack Barbecue
Dr. Larry & Gretchen Jacobson
Rusty & Ann Jandl
Norge W. Jerome, PhD
Jacqueline & Lynn Johnson
Gary E. Jones
Charles S. Joss, Jr.
Judy Joss Family
Ronald & Sarah Jury Family
Michael L. Kahn
Sybil & Norman Kahn
John Kander
Kansas City Symphony
Musicians' Association
Kansas City University of
Medicine & Biosciences
Rose & Barney Karbank
Dr. Andrew & Lynn Kaufman
Key Charitable Trust
Ellie & Richard Knopke
Regina & William Kort
Douglas & Susan Krebs
David C. Lady
Lathrop & Gage LLP
Leslie Bowles Lerner
Eli Lilly & Company Foundation, Inc.
Carol H. Logan & Fred J. Logan, Jr.
Dr. Edwin T. Long & Mary Long
Marlene & Sandy Louchheim

Mr. Robert P. Lyons
M&R Financial - Young & Liess
Thomas & Gay Manning
Jack & Bobbie Mathes
Ford & Christine Maurer
Michael T. Mayer Family
Carl & Lee McCaffree
Virginia B. McCoy
Charles E. & Candace L. F.
McDowell
Tom & Judith Pease McEvoy
Mr. & Mrs. James E. McGraw
Becky & Rowe McKinley
Jacquie McKinney's Legacy
Dan Meiners & David Brinkerhoff
Lance & Lissa Melber
The Harold & Marilyn Melcher
Foundation
Bernadette & Dick Miller Family
Marshall & Janet Miller
Mike & Shelly Miller
Ray & Kim Miller
Robert E. Miller Group
Virginia McD. Miller
Fred & Linda Mitchell Family
Marilyn & John Mitchell
Mark & Julie Morris
Sherrill Mulhern
Mr. & Mrs. A. H. Myers, Jr.
Jeannette Nichols
Nichols Company Charitable Trust
Brad & Linda Nicholson
Phyllis & Ronald Nolan
Tom W. & Jeanne H. Olofson
Charles & Jane Olsen
Jack & Georgia Olsen
Terri Olsen
Robert A. Olson Estate
Sally J. & R. Lyman Ott
Richard & Louise Parizek
Judith Parker
Deloras & L. Beaty Pemberton
The Anne Prunk & Bertil &
Ulla Brunk Families
Dr. & Mrs. Larry Piebenga
The Pioli Family
Bill & Susie Poplewell
Drs. Susan & Charles Porter
Peter & Cappy Powell
James & Kathryn Prevost
David & Patricia Raffel
Michael J. Rainen Family
Clark & Jeanne Redick
Mary & Steve Reiff
Carolyn & Bob Reintjes
J. B. Reynolds Foundation
Thomas & Marjorie Rhone
RLS Illumination Fund
Fred & Cindy Rock
Joe & Judy Roetheli & Li'l Red
Foundation
Connie & David Ross
Elizabeth S. Rowe
Melissa & Matthew Rubel
Mr. & Mrs. John Tough Russell
Randy & Mary Ann St. Clair
Dr. Robert & Anne St. Peter
& Family

Marilyn B. Salomon &
David W. Renner
Ken & Roswitha Schaffer
Daniel & Miriam Scharf
Lisa & Charles Schellhorn
Mary & David Schulte
Dr. & Mrs. A. William Shafer
Shook, Hardy & Bacon L.L.P.
Myra & Lester Siegel, Jr.
David & Linda Skaff
Susan & Tuck Spaulding
Barbara & Jack Spilker
Sprint Nextel Corporation
Dr. Gregory C. & Janet M. Starks
Jack & Martha Steadman Family
Foundation
Dr. Michael & Dr. Michella Stiles
Stinson Morrison Hecker LLP
John & Peggy Stone
Greg & Barbara Storm
Mary Jeannine Strandjord
Harry B. & Anna C. Strauss
Philanthropic Fund
Jo Ann & William D. Sullivan
Ann & John Sundeen
Peter Sunderman & Curt Thomas
Symphony League of Kansas City
William & Marilyn Taylor
Tension Envelope Foundation &
the Berkley Families
The Thau Family
Theater League
Marilyn Craigmiles Thomas
Barbara Welch Thompson
The Torosian Foundation
Sally Turk Tranin
Carol & Cliff Trenton
Cathy, Steve & Debbie Trenton
Julia Ann Trotter
Trudy Foundation
Marylou & John D. Turner
Norma & Bryce Turville
Union Pacific Corporation
U.S. Engineering Company
Sharon & Tom Van Dyke
Kathy & Mark Walker
Walker Uniform Service
Myron & Nicole Wang
Dr. Bradley & Barbara Warady
& Family
Terry & Linda Ward
Gary L. Warmker
Dale & Diane Wassergord
Larry & Joni Weiner
Sally & Bob West
Westar Energy
Frank & Helen Wewers
Byron & Sandra Whitaker
Helen E. (Pasek) White
Lewis & Shirley White
The John R. Wilson Family
Bob & Marcia Wolff
Ron & Marilyn Wollard
Mary Edith Woodward
Steve Wright & Paula Thurman
Roxy A. Yowell



Kauffman Center Endowment and Legacy Donors

The Dr. Jane Chu Endowment Fund for Youth in the Performing Arts

was created in 2014 to honor the Kauffman Center's first President & CEO and her outstanding achievements in the arts community.

Suzie Aron & Joseph Levin
Melinda & Tom Beal
George S. Bittner
Blue Cross & Blue Shield of Kansas City
Tom & Judy Bowser
Peter W. & Lynne K. Brown
Dr. Doug & Barbara Cusick & Family
John & Nancy Dillingham
Patrick Donnelly & Alexandra David
Peggy & Terry Dunn
Richard & Maureen Durwood
Sherry & Gary Forsee
David & Beth Fowler
J. Scott Francis, Discretionary Fund of the Francis
Family Foundation
Harvey & SuEllen Fried
Ester George
Greater Kansas City Community Foundation
Donald J. Hall
Mr. & Mrs. Barnett C. Helzberg, Jr.
Lisa Merrill Hickok/ Merrill LLC
Darcy Howe & John Black
Vera Isenberg
Rusty & Ann Jandl
Jewish Community Foundation of Greater KC
Dick & Sandy Jones, Fidelity Security Life Insurance

Julia Irene Kauffman Donor Advised Fund
Ewing Marion Kauffman Foundation
Muriel McBrien Kauffman Foundation
Jonathan & Nancy Lee Kemper/William T. Kemper
Foundation - Commerce Ba
Jonathan & Nancy Lee Kemper
Mr. & Mrs. Whitney E. Kerr, Sr.
Demi & Dave Kierszowski
Nancy & Herb Kohn
Tom & Jan Kreamer
David C. Lady
Dr. & Ms. Willie E. Lawrence, Jr.
Benny & Edith Lee
Dennis & Susan Lordi Marker
Ford & Christine Maurer
Jim & Annabel Nutter
The Privitera Family
Fred H. Pryor
Shirley Pryor
Theresa Schekirke
Paul & Katy Schofer
Betty C. Scott
Louis & Sharon Smith
Rick & Betsey Solberg
The Sosland Foundation
M. Jeannine Strandjord

Legacy Society members have made planned gifts to the Kauffman Center, helping the organization plan for the future.

Anonymous
Christopher E. Beal & Tim Van Zandt
Tom & Judy Bowser
Morton & Una Creditor
Dr. Doug & Barbara Cusick & Family
Richard & Maureen Durwood
Jonathan Klem
Nancy & Herb Kohn
Rachel Krantz & Edward Goldstein

C. Stephen Metzler & Brian D. Williams
Nerman Family
Charlotte & Bob Ronan
Thomas M. & Betty C. Scott
A. William & Elizabeth T. Shafer
Joe and Susan Sims
Rick & Betsey Solberg
Byron & Sandra Whitaker

Children's Wall handprints provide a unique opportunity to recognize a special child while ensuring exceptional arts experiences for generations to come. List of donors below are those who gave from July 1, 2016 - June 29, 2017.

John DiLeo & Tess Brothersen
David & Beth Fowler
Michael E. & Sylvia Haverty

Joel & Crystal Macmillan
The Thau Family
Tom Van Dyke and Kay Barnes

Lockton helps companies protect their people, property, and reputations. For five decades, our clients have depended on our risk management and employee benefits expertise, helping them take risks and grow.

To learn how Lockton can help you create a successful insurance management strategy for your business, visit lockton.com.



FOCUSED ON CLIENTS. DEDICATED TO RESULTS.

WE LIVE SERVICE![®]

Insurance | Risk Management | Employee Benefits | Retirement Services
444 W. 47th Street, Suite 900 Kansas City, MO 64112 • 816.960.9000

© 2017 Lockton, Inc. All rights reserved.



CONGRATULATIONS
to the
**KAUFFMAN CENTER
FOR THE PERFORMING ARTS**

The Contractors and Members
of the Sheet Metal Workers Local No. 2
are proud to have had a significant part
of the construction
of the Performing Arts Center.



DemandMetalExcellence.com



Here's Looking At You

The C-Class Cabriolet is the epitome of high fashion, art and elegance. With four contoured seats and a three-dimensional sculpture of rich finishes, the cabriolet cabin melds modern art with ultramodern technology and comforts. Its convertible top is woven not just from rich fabric but a legacy of craftsmanship that never goes out of style. The C-Class opens a new era of driving enjoyment and elegance. Discover the cabriolet that will be your number one at Aristocrat Motors or Mercedes-Benz of Kansas City.



ARISTOCRAT
MOTORS

9400 West 65th St | Merriam, KS
913.677.3300 | aristocratmotors.com



Mercedes-Benz
of KANSAS CITY

13851 Madison Avenue | Kansas City, MO
816.943.7000 | mbofkc.com

Members of the Soave Automotive Group

Mercedes-Benz



Curtain Going Up.

Make your next night at the theatre special by enjoying a delicious dinner at Metropolitan KC, featuring seafood, steak and barbeque.

Enjoy the convenience of one-stop parking and receive 10% off any entrée when you show your theatre ticket.



metropolitankmarriott.com
816.421.6800



*Our Signature
Barbeque Salmon*

Curtain Going Down.

After a wonderful night at the theatre, plan to avoid the drive and Take the Elevator Home.

Enjoy the convenience and comfort of a luxurious guest room with our *Performing Arts* rate, starting at \$149.

Book at

KansasCityMarriottDowntown.com
using the promotional code **KCY**.



MetropolitanKC | Theatre | Take the Elevator Home



**MARRIOTT
KANSAS CITY
DOWNTOWN**

200 West 12th Street Kansas City, MO 64105 816.421.6800 KansasCityMarriottDowntown.com



“Does your rug match your drapes”

KNOTTY RUG CO.

est. 2003

“THE KNOTTIER THE BETTER”

- Conveniently located to Better Serve You
- Fashionable and Classic Color Styles
- KC's Largest and Most Unique Selections
- We have a Very Knotty Rug for all

Come visit our exclusive Rug Gallery featuring a rich array of handwoven treasures

13TH ANNUAL

FRINGE

FESTIVAL KC

JULY 20-30

KCFRINGE.ORG



The
Nelson-Atkins
Museum
of Art

NOW OPEN

The BLOCH GALLERIES

Spectacular NEW galleries
embrace and welcome the
transformative gift of
the Marion and Henry
Bloch Collection.

nelson-atkins.org

45th & Oak, Kansas City, Missouri



Edgar Degas, French (1834–1917). *Dancer Making Points* (detail), 1879–1880. Pastel and gouache on paper mounted on board, 19 1/4 x 14 1/2 inches. Gift of Marion and Henry Bloch, 2008.53.

Now available
— at the bar —



— *The Perfect Pairing* —
*Amigoni Wine & Kauffman Center
for the Performing Arts*



**AMIGONI URBAN WINERY SPECIALIZES IN SMALL
LOTS OF HANDCRAFTED WINES
PRODUCED IN THE STOCKYARDS DISTRICT OF
KANSAS CITY'S WEST BOTTOMS.**

**VISIT OUR TASTING ROOM IN THE HISTORIC
DAILY DROVERS TELEGRAM BUILDING.
WE'LL HAVE A GLASS WAITING FOR YOU!**

**913-890-3289 · WWW.AMIGONI.COM · INFO@AMIGONI.COM
1505 GENESSEE SUITE #100 · KANSAS CITY, MO 64102
TUESDAY-THURSDAY & SATURDAY 11 A.M. TO 6 P.M.
FRIDAY 11 A.M. TO 7 P.M.
SUNDAY NOON TO 5 P.M.**

Host Your Event

AT THE KAUFFMAN CENTER FOR THE PERFORMING ARTS



Photo: Visionaire Studios



Photo: Freeland Photography

Create a memorable experience in one of the world's most iconic backdrops. Whether it's a wedding reception, gala or corporate event, our dedicated event team will work with you to create a lasting impression for your affair.

**To book your event please contact the Sales Manager at
816.994.7213 or events@kauffmancenter.org.**



opus3
ARTISTS

- KAUFFMAN CENTER -
PRESENTS

VIENNA BOYS

*** **CHOIR** ***

Saturday, November 11, 2017

Helzberg Hall | 8:00 P.M.

KAUFFMAN CENTER FOR THE PERFORMING ARTS

PREMIER PARTNER

 **Saint Luke's**
HEALTH SYSTEM

BUILDING SPONSOR

 **Mercedes-Benz**
of KANSAS CITY 
 **ARISTOCRAT**
MOTORS 

SPOTLIGHT

If you love the Kauffman Center, you will love a Spotlight membership.

MEMBERSHIP OFFERS

Unique
BENEFITS

Priority
ACCESS

A Way to
GIVE BACK

Spotlight memberships, depending on the level, elevate your experience with the Kauffman Center by giving you perks like presale access to performance tickets, meet and greets with artists, parking passes, and much more.

Spotlight memberships are tax-deductible and help us fulfill our vision of enriching the lives of everyone in our community through extraordinary and diverse performing arts experiences.

Spotlight memberships begin at \$65. Join today!

**For more information or to join, visit
www.kauffmancenter.org/spotlight
or call 816.994.7220**

The Kauffman Center is a non-profit 501(c)3 organization

Photo: Palma Kalinsky

- KAUFFMAN CENTER -
PRESENTS

BRANFORD MARSALIS
QUARTET WITH SPECIAL GUEST
+ KURT ELLING +

Monday, July 31, 2017

Muriel Kauffman Theatre | 7:00 p.m.

KAUFFMAN CENTER FOR THE PERFORMING ARTS

PREMIER PARTNER

 **Saint Luke's**
HEALTH SYSTEM

BUILDING SPONSOR



Mercedes-Benz
of KANSAS CITY



ARISTOCRAT
MOTORS



Be at the Center of it all:

VOLUNTEER



Photo by David Riffel

Kauffman Center would like to congratulate and thank the following three **Diamond Level Volunteers** who have contributed more than 2,500 volunteer service hours.

Phil Hampton

"I enjoy volunteering at the Kauffman Center because it adds interest and people to people interaction to my everyday routine. I like acknowledging season ticket holders or returning patrons but I especially enjoy greeting new patrons who come into this marvelous space with their eyes glued to the ceiling and their cameras flashing."

Leeta Murphy

"I began at the Kauffman in June of 2012. My orientation was on June 2 and I worked my first shift as an usher for Joshua Bell with the Kansas City Symphony and was hooked! I enjoy meeting the patrons and helping them have the best experience possible at the Kauffman Center."

Kent McCall

"I love the performing arts and I am energized by being with others. The perfect place in Kansas City to combine those interests is The Kauffman Center for the Performing Arts."

To learn more about the Kauffman Center's volunteer program and get involved:

Visit kauffmancenter.org or contact volunteer@kauffmancenter.org



Kauffman Center
FOR THE PERFORMING ARTS

— KAUFFMAN CENTER —
PRESENTS

MARY CHAPIN CARPENTER

with special guest Sarah Jarosz

**WEDNESDAY,
JULY 26, 2017**

Muriel Kauffman Theatre
7:30 P.M.

**KAUFFMAN CENTER FOR THE
PERFORMING ARTS**

Photo: Aaron Farrington

PREMIER PARTNER

 **Saint Luke's**
HEALTH SYSTEM

BUILDING SPONSOR



Mercedes-Benz
of KANSAS CITY



ARISTOCRAT
MOTORS





KANSAS CITY
SYMPHONY

**SEASON TICKETS
AVAILABLE NOW!**

CLASSICAL | POPS | FAMILY



Best Seats • Lowest Prices

(816) 471-0400

KCSYMPHONY.ORG

UMKC

**THE PLACE
FOR PEOPLE
GOING
PLACES**

At UMKC, we are committed to student success. We offer over 125 degree programs, scholarships and in-state tuition for some Kansas residents.

UMKC.EDU/ADMISSIONS



To advertise in the next

- Kauffman Center -

PRESENTS

Program

Contact:

Angie Riffel

Office: 913-951-8446

Cell: 816-805-9826

ariffel@metromediapublishers.com

metromedia

Photo: Kevin Nixon

- KAUFFMAN CENTER -
PRESENTS



2017 ROCK AND ROLL HALL OF FAME INDUCTEES

YES

FEATURING

JON ANDERSON · TREVOR RABIN · RICK WAKEMAN

Tuesday, September 5, 2017
KAUFFMAN CENTER FOR THE PERFORMING ARTS

PREMIER PARTNER



BUILDING SPONSOR





metromedia



Communication

Communication
transmission of information,
messages, or thoughts
by speech, writing, signal
as mail, telephone, televi



Print. Digital Media. MetroMedia.

PRINT.
DIGITAL
METROMEDIA.
We create custom media specializing
in capturing your vision, and turning
that vision into a voice that communicates
with **YOUR** target audience.

CELEBRATING 20 YEARS IN CUSTOM PUBLISHING AND MEDIA



metromedia

Call us today at **913.951.8413**
metromediapublishers.com

- Kauffman Center -

PRESENTS

HERBIE HANCOCK

USA SUMMER TOUR 2017



WITH VINNIE COLAIUTA - DRUMS

JAMES GENUS - BASS

LIONEL LOUEKE - GUITAR

TERRACE MARTIN - KEYBOARDS/SAXOPHONE

SATURDAY, AUGUST 12, 2017

MURIEL KAUFFMAN THEATRE
KAUFFMAN CENTER FOR THE PERFORMING ARTS

PREMIER PARTNER

 **Saint Luke's**
HEALTH SYSTEM

BUILDING SPONSOR



ARISTOCRAT
MOTORS



Mercedes-Benz
of KANSAS CITY



PATRON INFORMATION

Buy Tickets

The box office is open Monday through Thursday 10am - 5pm, and Friday 10am - 3pm during summer hours. Closed Saturday and Sunday.

Please don't leave your seats empty

- Donate your tickets for re-sale if you cannot attend the performance.
- Return tickets to the point-of-purchase organization at least 24 hours before the event to receive a tax-deductible donation receipt.
- Tickets are non-refundable, except in the case of a cancelled event.

For Your Convenience

The Kauffman Center offers passenger drop-off locations at both the north and south entrances to the building. Additionally, valet parking service is available for most performances for \$18 cash night of the event (or \$16 in advance). Examples of amenities available at the Kauffman Center include seasonal coat check service near the box office, refreshments available before performances and during intermission, family restrooms located throughout the Center, and hearing assist equipment available upon request. To serve your gift needs, the Kauffman Center Gift Shop is located in Brandmeyer Great Hall.

Keep in Touch

Visit kauffmancenter.org to sign up for our email newsletter and stay in-the-know about Kauffman Center announcements on programming, events, and opportunities for involvement.

Join the Discussion

Find us on [facebook.com/kauffmancenter](https://www.facebook.com/kauffmancenter) or follow @kauffmancenter on Twitter for exclusive news, discounts, and conversation. We love hearing from you!

Our Neighborhood

Located in the Crossroads Arts District just blocks from the Kansas City Power & Light District and the Sprint Center, the Kauffman Center for the Performing Arts sits at the very heart of Kansas City's revitalized and reenergized downtown. Visitors to the Kauffman Center have numerous entertainment, lodging and dining options just outside the Kauffman Center's door. For more information, please visit kauffmancenter.org/visit-the-center.

Public and private tours, approximately 60 minutes in length, are available with advance reservations. Each tour is led by a trained guide and strives to give attendees a full experience. However, due to our active performance and rehearsal schedule, we cannot guarantee that every tour will visit both performance halls. For details and pricing information, visit kauffmancenter.org/tours.

ACCESSIBILITY

The Kauffman Center's promise to "bring artists and audiences together" is reflected in many ways, including accessibility for those who may have auditory, visual or mobility limitations.

Patron Drop Off

Kauffman Center has two drop-off areas available:

- At 16th and Central Streets
- On the private drive to the south of the building, entered from Broadway

From either drop-off point, drivers will go less than a half block to turn into underground parking.

Restrooms

Kauffman Center restrooms fully comply with disability requirements of both the City of Kansas City, Missouri and the ADA. This includes access through restroom doors, to sinks, and into stalls. There are also plenty of restrooms; the Kauffman Center contains a total of 196 public restroom stalls.

Patron Access to Seating

Within both halls there is a great deal of seating that does not require any stair use at all. Both halls have seating areas in varying locations and at multiple ticket price levels reserved for patrons using wheelchairs. Each wheelchair position also has a companion seat available. Please discuss specific needs with our ticketing services team in advance of your visit.

Headsets

There are 88 headsets for patrons who would benefit from amplified sound. Headsets are available free of charge to all guests and can be checked out from the Kauffman Center gift shop.

Signage

Signage throughout the Kauffman Center complies with ADA standards. Major support and life safety spaces, such as stairs and restrooms, are identified with tactile and Braille signs. Elevator panels and jamps provide raised letters and Braille text, as well.

Have questions about accessibility issues? Contact us at 816-994-7222 or boxoffice@kauffmancenter.org.

PERFORMANCE GUIDELINES

If emergency calls are anticipated, please notify the house management of your seating location. Emergency calls will be received at our security desk 816-994-7244.

Latecomers are seated at the discretion of the artist and house management.

Refreshments are available at most events. Food and beverages are not permitted in Muriel Kauffman Theatre or Helzberg Hall.

Coat check services are available free of charge to guests during cold weather months. The coat check is located near the restrooms on level two.

Regardless of age, all attendees must have tickets. Some events are not appropriate for all children due to content or duration.

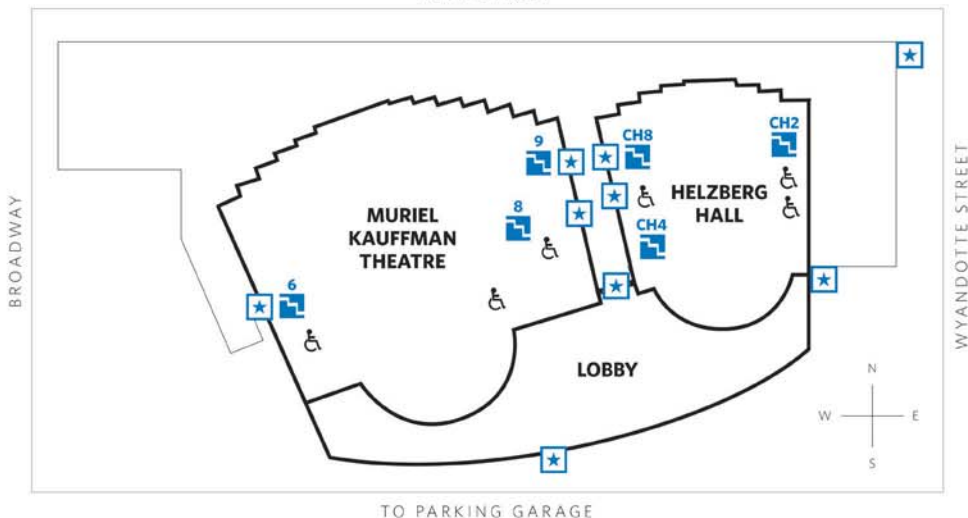
Use of photography equipment or recording devices (video, audio or other medium) is prohibited without written consent. Attendance of a Kauffman Center event gives the patron's consent to be photographed or recorded by talent, venue or their contractors.

As a courtesy to the artists and other audience members, please silence cell phones and other devices for the duration of the performance.

Smoking inside of the Kauffman Center for the Performing Arts is strictly prohibited by city ordinance.

For lost articles, please contact our security office at 816-994-7244.

In case of emergency, the Kauffman Center is a technically-advanced performing arts center with comprehensive alert systems. Exits are clearly marked and lighted. Please take time to identify the exits nearest you.



**Patron
Emergency Exit**



**Emergency Exit
Stairwell**



**Emergency Evacuation
Assistance***

*Varies per floor. Look for sign on wall.

KAUFFMAN CENTER FOR THE PERFORMING ARTS

Emergency Evacuation Procedures

Kauffman Center is equipped with advanced life-safety early alert systems. Each performance hall is designed with emergency exits in case of an evacuation. In the event of severe weather, please remain seated and clear the lobby areas and await further instructions.

- 1 In the event of an emergency, the performance will be interrupted and horns and strobes will sound.**

- 2 Emergency instructions will be delivered from stage, and Kauffman Center's trained ushering staff will provide evacuation instructions.**

- 3 Lighted red (Muriel Kauffman Theatre) and green (Helzberg Hall) exit signs will serve to guide patrons to the emergency exit paths.**

- 4 Patrons with mobility limitations should remain in the venue near one of the marked "emergency Evacuation Assistance" locations. First responders will evacuate those requiring rescue assistance immediately upon their arrival.**

- 5 Please note: elevators and primary performance entrances are NOT used in the case of an emergency evacuation.**

Kauffman Center's emergency egress plan, which includes an appropriate amount of investigational time to verify the source of an alarm, was developed with the assistance of the Kansas City, MO Fire Marshall's Office



IT'S GO TIME

Welcome to KC's Winning Destination where the hottest slots and world-class tables meet decadent dining and Four-Diamond luxury. Non-stop thrills are closer than you ever imagined possible.

JUST MINUTES FROM DOWNTOWN

ARGOSY[®]
CASINO
HOTEL & SPA

  777 N.W. Argosy Casino Parkway • Riverside, MO • ArgosyKansasCity.com • 816-746-3100

Must be 21. Gambling Problem? Call 1.888.BETS.OFF or Visit 888betsoff.org

HELZBERG DIAMONDS.

HERE'S TO *Love*.™



A proud member of the Kansas City family

HELZBERG COLLECTIONS® AT COUNTRY CLUB PLAZA
OAK PARK MALL • TOWN CENTER • ZONA ROSA
SUMMIT WOODS CROSSING • INDEPENDENCE CENTER
THE LEGENDS AT VILLAGE WEST